

LAMP IRAN

Lampiran 1. Perhitungan DOL

Company	Tahun	Operating	Growth Operating	Total	Growth Total	Deg. Oper
		Profit	Profit (%)	Revenue	Revenue (%)	Leverage
		(Million Rp)		(Million Rp)		(X)
		1	2	3	4	5=2/4
DVLA	2001	61851		509618		
	2002	70563	14.09	549020	7.73	1.82
	2003	82009	16.22	390346	-28.90	-0.56
	2004	80062	-2.37	426796	9.34	-0.25
	2005	76255	-4.76	540437	26.63	-0.18
	2006	78525	2.98	576669	6.70	0.44
	2007	67659	-13.84	509498	-11.65	1.19
	2008	78166	15.53	557599	9.44	1.64
INAF	2001	172333		615426		
	2002	-52258	-130.32	687984	11.79	-11.05
	2003	-48489	-7.21	498206	-27.58	0.26
	2004	50626	-204.41	689522	38.40	-5.32
	2005	35081	-30.71	684040	-0.80	38.62
	2006	62233	77.40	1026676	50.09	1.55
	2007	44710	-28.16	1273162	24.01	-1.17
	2008	63019	40.95	1478585	16.13	2.54
KAEF	2001	173882		1422761		
	2002	60872	-64.99	1538712	8.15	-7.97
	2003	92321	51.66	1816384	18.05	2.86
	2004	124709	35.08	1925990	6.03	5.81
	2005	84718	-32.07	1816433	-5.69	5.64
	2006	60631	-28.43	2189715	20.55	-1.38
	2007	77500	27.82	2365636	8.03	3.46
	2008	107037	38.11	2704728	14.33	2.66
KLBF	2001	336423		2046499		
	2002	514407	52.90	2561802	25.18	2.10
	2003	327435	-36.35	2889209	12.78	-2.84
	2004	733588	124.04	3413097	18.13	6.84
	2005	1060014	44.50	5870939	72.01	0.62

Dilanjutkan kehalaman 92

Lanjutan dari halaman 91

	2006	1071271	1.06	6071550	3.42	0.31
	2007	1129355	5.42	7004910	15.37	0.35
	2008	706822	-37.41	1142712	-83.69	0.45
MERCK	2001	70270		224074		
	2002	51154	-27.20	220918	-1.41	19.31
	2003	68223	33.37	296320	34.13	0.98
	2004	82918	21.54	373341	25.99	0.83
	2005	81998	-1.11	386346	3.48	-0.32
	2006	119535	45.78	487601	26.21	1.75
	2007	123853	3.61	547238	12.23	0.30
	2008	140154	13.16	637134	16.43	0.80
SQBI	2001	24509		175173		
	2002	39235	60.08	70045	-60.01	-1.00
	2003	49785	26.89	197492	181.95	0.15
	2004	70914	42.44	221595	12.20	3.48
	2005	18908	-73.34	166816	-24.72	2.97
	2006	62917	232.75	243776	46.13	5.05
	2007	80370	27.74	260248	6.76	4.11
	2008	134212	66.99	358938	37.92	1.77
PYFA	2001	8669		29227		
	2002	1487	-82.85	24629	-15.73	5.27
	2003	1852	24.55	27256	10.67	2.30
	2004	2424	30.89	33969	24.63	1.25
	2005	2793	15.22	39640	16.69	0.91
	2006	4039	44.61	61337	54.74	0.82
	2007	4160	3.00	86643	41.26	0.07
	2008	6157	48.00	119581	38.02	1.26

Sumber: Data Sekunder diolah

Laporan Rata-rata DOL

DOL (X)							
	2002	2003	2004	2005	2006	2007	2008
DVLA	1.82	-0.56	-0.25	-0.18	0.44	1.19	1.64
INAF	-11.05	0.26	-5.32	38.62	1.55	-1.17	2.54
KAEF	-7.97	2.86	5.81	5.64	-1.38	3.46	2.66
KLBF	2.10	-2.84	6.84	0.62	0.31	0.35	0.45
MERCK	19.31	0.98	0.83	-0.32	1.75	0.30	0.80
SQBI	-1.00	0.15	3.48	2.97	5.05	4.11	1.77
PYFA	5.27	2.30	1.25	0.91	0.82	0.07	1.26
Rata-rata	1.21	0.45	1.81	6.89	1.22	1.19	1.59

Sumber: Data Sekunder diolah

Lampiran 2. Perhitungan DFL

Company	Tahun	Operating Profit (Million Rp)	Growth Operating Profit (%)	Net Income (Million Rp)	Growth Net Income (%)	Deg. Fin Leverage (X)
		1	2	3	4	5=4/2
DVLA	2001	61851		-1883		
	2002	70563	14.09	63531	-3473.92	-246.55
	2003	82009	16.22	48654	-23.42	-1.44
	2004	80062	-2.37	49811	2.38	-1.00
	2005	76255	-4.76	71576	43.70	-9.19
	2006	78525	2.98	52509	-26.64	-8.95
	2007	67659	-13.84	49918	-4.93	0.36
	2008	78166	15.53	70819	41.87	2.70
INAF	2001	172333		222542		
	2002	-52258	-130.32	-59826	-126.88	0.97
	2003	-48489	-7.21	-130562	118.24	-16.39
	2004	50626	-204.41	7239	-105.54	0.52
	2005	35081	-30.71	9596	32.56	-1.06
	2006	62233	77.40	15241	58.83	0.76
	2007	44710	-28.16	11077	-27.32	0.97
	2008	63019	40.95	5032	-54.57	-1.33
KAEF	2001	173882		132263		
	2002	60872	-64.99	35408	-73.23	1.13
	2003	92321	51.66	45494	28.49	0.55
	2004	124709	35.08	77755	70.91	2.02
	2005	84718	-32.07	52827	-32.06	1.00
	2006	60631	-28.43	43990	-16.73	0.59
	2007	77500	27.82	52189	18.64	0.67
	2008	107037	38.11	55394	6.14	0.16
KLBF	2001	336423		32665		
	2002	514407	52.90	266933	717.18	13.56

Dilanjutkan halaman 95

Lanjutan dari halaman 94

	2003	327435	-36.35	322884	20.96	-0.58
	2004	733588	124.04	372335	15.32	0.12
	2005	1060014	44.50	626117	68.16	1.53
	2006	1071271	1.06	676582	8.06	7.59
	2007	1129355	5.42	705694	4.30	0.79
	2008	706822	-37.41	706882	0.17	-4.54
MERCK	2001	70270		56398		
	2002	51154	-27.20	37429	-33.63	1.24
	2003	68223	33.37	50580	35.14	1.05
	2004	82918	21.54	57239	13.17	0.61
	2005	81998	-1.11	57700	0.81	-0.73
	2006	119535	45.78	86538	49.98	1.09
	2007	123853	3.61	89485	3.41	0.94
	2008	140154	13.16	98620	10.21	0.78
SQBI	2001	24509		14305		
	2002	39235	60.08	19905	39.15	0.65
	2003	49785	26.89	28251	41.93	1.56
	2004	70914	42.44	40352	42.83	1.01
	2005	18908	-73.34	9048	-77.58	1.06
	2006	62917	232.75	43172	377.14	1.62
	2007	80370	27.74	52176	20.86	0.75
	2008	134212	66.99	94271	80.68	1.20
PYFA	2001	8669		4694		
	2002	1487	-82.85	437	-90.69	1.09
	2003	1852	24.55	619	41.65	1.70
	2004	2424	30.89	1432	131.34	4.25
	2005	2793	15.22	1328	-7.26	-0.48
	2006	4039	44.61	1729	30.20	0.68
	2007	4160	3.00	1743	0.81	0.27
	2008	6157	48.00	2309	32.47	0.68

Sumber: Data Sekunder diolah

Laporan Rata-rata DFL

DFL (X)							
	2002	2003	2004	2005	2006	2007	2008
DVLA	-246.55	-1.44	-1.00	-9.19	-8.95	0.36	2.70
INAF	0.97	-16.39	0.52	-1.06	0.76	0.97	-1.33
KAEF	1.13	0.55	2.02	1.00	0.59	0.67	0.16
KLBF	13.56	-0.58	0.12	1.53	7.59	0.79	-4.54
MERCK	1.24	1.05	0.61	-0.73	1.09	0.94	0.78
SQBI	0.65	1.56	1.01	1.06	1.62	0.75	1.20
PYFA	1.09	1.70	4.25	-0.48	0.68	0.27	0.68
Rata-rata	-32.55	-1.94	1.08	-1.12	0.48	0.68	-0.05

Sumber: Data Sekunder diolah

Lampiran 3. Perhitungan DER

Company	Tahun	Total Liability (Million Rp)	Total Equity (Million Rp)	DER (X)
	0	1	2	3=1/2
DVLA	2002	95837	227085	42.20
	2003	106170	269216	39.44
	2004	112147	319027	35.15
	2005	160025	390604	40.97
	2006	145025	412312	35.17
	2007	98701	462230	21.35
	2008	129812	507849	25.56
INAF	2002	412039	390436	105.53
	2003	373712	248426	150.43
	2004	268258	255665	104.93
	2005	253578	265245	95.60
	2006	406451	280486	144.91
	2007	717874	291563	246.22
	2008	669216	296595	225.63
KAEF	2002	361248	677297	53.34
	2003	614144	754001	81.45
	2004	358855	814001	44.09
	2005	333382	844220	39.49
	2006	390571	870654	44.86
	2007	478712	908028	52.72
	2008	497905	947765	52.53
KLBF	2002	1525619	489918	311.40
	2003	1161321	828957	140.09
	2004	782589	1219193	64.19
	2005	1822023	2333172	78.09
	2006	1080566	2994817	36.08
	2007	1121539	3386862	33.11
	2008	1359297	3622399	37.52
MERCK	2002	23090	149243	15.47
	2003	40819	159503	25.59

Dilanjutkan kehalaman 98

Lanjutan dari halaman 97

	2004	46429	154021	30.14
	2005	37657	180361	20.88
	2006	47120	235539	20.01
	2007	50830	280224	18.14
	2008	47741	327324	14.59
SQBI	2002	44190	88821	49.75
	2003	52190	113234	46.09
	2004	48801	126808	38.48
	2005	63777	101245	62.99
	2006	76542	130594	58.61
	2007	68720	158702	43.30
	2008	80180	214545	37.37
PYFA	2002	9658	60092	16.07
	2003	7556	60711	12.45
	2004	8287	62143	13.34
	2005	13080	63471	20.61
	2006	17927	65201	27.49
	2007	28213	66944	42.14
	2008	29402	69253	42.46

Sumber: Data Sekunder diolah

Laporan Rata-rata DER

	(X) DER						
	2002	2003	2004	2005	2006	2007	2008
DVLA	42,20	39,44	35,15	40,97	35,17	21,35	25,56
INAF	105,53	150,43	104,93	95,60	144,91	246,22	225,63
KAEF	53,34	81,45	44,09	39,49	44,86	52,72	52,53
KLBF	311,40	140,09	64,19	78,09	36,08	33,11	37,52
MERCK	15,47	25,59	30,14	20,88	20,01	18,14	14,59
SQBI	49,75	46,09	38,48	62,99	58,61	43,30	37,37
PYFA	16,07	12,45	13,34	20,61	27,49	42,14	42,46
Rata-rata	84,82	70,79	47,19	51,23	52,45	65,28	62,24

Sumber: Data Sekunder diolah

Lampiran 4. Perhitungan ROA

Company	Tahun	Operating Profit	Total Asset	ROA
		(Million Rp)	(Million Rp)	(%)
	0	1	2	$1 / 2 * 100 = 3$
DVLA	2002	70563	322922	21.85
	2003	82009	375,386	21.85
	2004	80062	431,174	18.57
	2005	76255	550,629	13.85
	2006	78525	557,338	14.09
	2007	67659	560,931	12.06
	2008	78166	637,661	12.26
INAF	2002	-52258	810,028	-6.45
	2003	-48489	629,217	-7.71
	2004	50626	523,923	9.66
	2005	35081	518,824	6.76
	2006	62233	686,937	9.06
	2007	44710	1,009,438	4.43
	2008	63019	965,812	6.52
KAEF	2002	60872	1,038,545	5.86
	2003	92321	1,368,145	6.75
	2004	124709	1,173,438	10.63
	2005	84718	1,177,603	7.19
	2006	60631	1,261,225	4.81
	2007	77500	1,386,739	5.59
	2008	107037	1,445,670	7.40
KLBF	2002	514407	2,015,538	25.52
	2003	327435	2,448,390	13.37
	2004	733588	3,016,864	24.32
	2005	1060014	4,633,399	22.88
	2006	1071271	4,624,619	23.16
	2007	1129355	5,138,213	21.98
	2008	706822	5,703,832	12.39
MERCK	2002	51154	172,336	29.68
	2003	68223	200,328	34.06

Dilanjutkan kehalaman 100

Lanjutan dari halaman 99

	2004	82918	200,466	41.36
	2005	81998	218,034	37.61
	2006	119535	282,699	42.28
	2007	123853	331,062	37.41
	2008	140154	375,064	37.37
SQBI	2002	39235	133,011	29.50
	2003	49785	165,424	30.10
	2004	70914	190,599	37.21
	2005	18908	165,022	11.46
	2006	62917	207,136	30.37
	2007	80370	227,422	35.34
	2008	134212	294,725	45.54
PYFA	2002	1487	69,751	2.13
	2003	1852	68,267	2.71
	2004	2424	70,430	3.44
	2005	2793	76,551	3.65
	2006	4039	83,127	4.86
	2007	4160	95,157	4.37
	2008	6157	98,655	6.24

Sumber: Data Sekunder diolah

Laporan Rata-rata ROA

(% ROA)							
	2002	2003	2004	2005	2006	2007	2008
DVLA	21.85	21.85	18.57	13.85	14.09	12.06	12.26
INAF	-6.45	-7.71	9.66	6.76	9.06	4.43	6.52
KAEF	5.86	6.75	10.63	7.19	4.81	5.59	7.40
KLBF	25.52	13.37	24.32	22.88	23.16	21.98	12.39
MERCK	29.68	34.06	41.36	37.61	42.28	37.41	37.37
SQBI	29.50	30.10	37.21	11.46	30.37	35.34	45.54
PYFA	2.13	2.71	3.44	3.65	4.86	4.37	6.24
Rata-rata	21.05	14.45	20.74	14.77	18.38	17.31	18.25

Sumber: Data Sekunder diolah

Lampiran 5. Perhitungan ROE

company	Tahun	Net Income (Million Rp)	Total Equity (Million Rp)	ROE (%)
	0	1	2	1/2*100=3
DVLA	2002	63531	227085	27.98
	2003	48654	269216	18.07
	2004	49811	319027	15.61
	2005	71576	390604	18.32
	2006	52509	412312	12.74
	2007	49918	462230	10.80
	2008	70819	507849	13.94
INAF	2002	-59826	390436	-15.32
	2003	-130562	248426	-52.56
	2004	7239	255665	2.83
	2005	9596	265245	3.62
	2006	15241	280486	5.43
	2007	11077	291563	3.80
	2008	5032	296595	1.70
KAEF	2002	35408	677297	5.23
	2003	45494	754001	6.03
	2004	77755	814001	9.55
	2005	52827	844220	6.26
	2006	43990	870654	5.05
	2007	52189	908028	5.75
	2008	55394	947765	5.84
KLBF	2002	266933	489918	54.49
	2003	322884	828957	38.95
	2004	372335	1219193	30.54
	2005	626117	2333172	26.84
	2006	676582	2994817	22.59
	2007	705694	3386862	20.84
	2008	706882	3622399	19.51
MERCK	2002	37429	149243	25.08
	2003	50580	159503	31.71
	2004	57239	154021	37.16

Dilanjutkan halaman 102

Lanjutan dari halaman 101

	2005	57700	180361	31.99
	2006	86538	235539	36.74
	2007	89485	280224	31.93
	2008	98620	327324	30.13
SQBI	2002	19905	88821	22.41
	2003	28251	113234	24.95
	2004	40352	126808	31.82
	2005	9048	101245	8.94
	2006	43172	130594	33.06
	2007	52176	158702	32.88
	2008	94271	214545	43.94
PYFA	2002	437	60092	0.73
	2003	619	60711	1.02
	2004	1432	62143	2.30
	2005	1328	63471	2.09
	2006	1729	65201	2.65
	2007	1743	66944	2.60
	2008	2309	69253	3.33

Sumber: Data Sekunder diolah

Laporan Rata-rata ROE

(%) ROE							
	2002	2003	2004	2005	2006	2007	2008
DVLA	27.98	18.07	15.61	18.32	12.74	10.80	13.94
INAF	-15.32	-52.56	2.83	3.62	5.43	3.80	1.70
KAEF	5.23	6.03	9.55	6.26	5.05	5.75	5.84
KLBF	54.49	38.95	30.54	26.84	22.59	20.84	19.51
MERCK	25.08	31.71	37.16	31.99	36.74	31.93	30.13
SQBI	22.41	24.95	31.82	8.94	33.06	32.88	43.94
PYFA	0.73	1.02	2.30	2.09	2.65	2.60	3.33
Rata-rata	17.23	9.74	18.55	14.01	16.89	15.51	16.91

Sumber: Data Sekunder diolah

Lampiran 6. Perhitungan PER

Company	Tahun	CLOSE PRICE	EPS	PER	PERt+1
		(Million Rp)	(Million Rp)	(X)	(X)
	0	1	2	1/2=3	
DVLA	2002	480	113	4.25	8.91
	2003	775	87	8.91	7.87
	2004	700	89	7.87	17.12
	2005	750	43.82	17.12	16.10
	2006	1510	93.77	16.10	17.95
	2007	1600	89.14	17.95	7.59
	2008	960	126.46	7.59	11.85
	2009	1530	129.06	11.85	
INAF	2002	240	-19	-12.63	-4.05
	2003	170	-42	-4.05	85
	2004	170	2	85	2.3
	2005	115	50	2.3	1.07
	2006	100	93.77	1.07	2.30
	2007	205	89.14	2.30	0.40
	2008	50	126.46	0.40	120.29
	2009	83	0.69	120.29	
KAEF	2002	185	6	30.83	26.25
	2003	210	8	26.25	14.64
	2004	205	14	14.64	-5.08
	2005	145	-28.57	-5.08	20.83
	2006	165	7.92	20.83	32.45
	2007	305	9.4	32.45	7.62
	2008	76	9.97	7.62	11.29
	2009	127	11.25	11.29	
KLBF	2002	275	66	4.17	0.06
	2003	450	6973	0.06	0.09
	2004	780	9033	0.09	15.97
	2005	990	62	15.97	17.98
	2006	1,190	66.2	17.98	18.13
	2007	1,260	69.49	18.13	5.75
	2008	400	69.6	5.75	14.21

Dilanjutkan kehalaman 104

Lanjutan dari halaman 103

	2009	1,300	91.47	14.21	
MERCK	2002	10000	1671	5.98	7.09
	2003	16,000	2,258	7.09	8.92
	2004	22,800	2,555	8.92	9.43
	2005	24,300	2,576	9.43	10.35
	2006	40,000	3863.29	10.35	13.14
	2007	52,500	3994.85	13.14	8.06
	2008	35,500	4402.68	8.06	12.22
	2009	80,000	6,549.12	12.22	
SQBI	2002	10,500	1944	5.40	5.07
	2003	14,000	2,759	5.07	3.15
	2004	12,400	3,941	3.15	11.88
	2005	10,500	884	11.88	1.25
	2006	55,500	44,415.80	1.25	1.21
	2007	65,000	53,679.21	1.21	0.54
	2008	52,000	96,986.84	0.54	1.01
	2009	136,800	135,040.44	1.01	
PYFA	2002	250	1.00	250	80
	2003	80	1.00	80	20
	2004	60	3.00	20	-1.35
	2005	45	-33.33	-1.35	15.48
	2006	50	3.23	15.48	24.85
	2007	81	3.26	24.85	11.57
	2008	50	4.32	11.57	15.60
	2009	110	7.05	15.60	

Sumber: Data Sekunder diolah

Laporan Rata-rata PER

PER (X)							
	2002	2003	2004	2005	2006	2007	2008
DVLA	8.90	7.86	17.11	16.10	17.94	7.59	11.85
INAF	-4.04	85	2.3	1.06	2.29	0.39	120.28
KAEF	26.25	14.64	-5.07	20.83	32.44	7.62	11.28
KLBF	0.06	0.08	15.96	17.97	18.13	5.74	14.21
MERCK	7.08	8.92	9.43	10.35	13.14	8.06	12.21
SQBI	5.074	3.14	11.87	1.24	1.21	0.53	1.01
PYFA	80	20	-1.35	15.47	24.84	11.57	15.60
Rata-rata	17.61	19.95	7.181	11.86	15.71	5.93	26.63

Sumber: Data Sekunder diolah

Lampiran 7: DATA DOL,DFL,DER,ROA,ROE,PER

	Tahun	DOL (X)	DFL (X)	DER (X)	ROA (%)	ROE (%)	PER (X)
DVLA	2002	1,82	-246,55	42,20	21.85	27.98	8.9
	2003	-0.56	-1.44	39,43	21.85	18.07	7.86
	2004	-0,25	-1,00	35,15	18.57	15.61	17.11
	2005	-0,17	-9,18	40,96	13.85	18.32	16.1
	2006	0,44	-8,94	35,17	14.09	12.74	17.94
	2007	1,18	0,35	21,35	12.06	10.8	7.59
	2008	1,64	2,69	25,56	12.26	13.94	11.85
INAF	2002	-11,05	0,97	105,53	-6.45	-15.32	-4.04
	2003	0,26	-16,39	150,43	-7.71	-52.56	85
	2004	-5,32	0,51	104,92	9.66	2.83	2.3
	2005	38,62	-1,06	95,60	6.76	3.62	1.06
	2006	1,54	0,76	144,90	9.06	5.43	2.29
	2007	-1,17	0,97	246,215	4.43	3.8	0.39
	2008	2,53	-1,33	143,71	6.52	1.7	120.28
KAEF	2002	-7,97	1,13	53,36	5.86	5.23	26.25
	2003	2,86	0,55	81,45	6.75	6.03	14.64
	2004	5,81	2,02	44,08	10.63	9.55	-5
	2005	5.63	0,99	39,48	7.19	6.26	20.83
	2006	-1,38	0,58	44,85	4.81	5.05	32.44
	2007	3,46	0,66	52,71	5.59	5.75	7.622
	2008	2,65	0,16	52,53	7.4	5.84	11.28
KLBF	2002	2,10	13,55	311,402	25.52	54.49	0.064
	2003	-2,84	-0,57	140,94	13.37	38.95	0.08
	2004	6,84	0,12	64,18	24.32	30.54	15.96
	2005	0,61	1,53	78,09	22.88	26.84	17.97
	2006	0,31	7,58	36,08	23.16	22.59	18.13
	2007	0,35	0,79	33,11	21.98	20.84	5.74
	2008	0,44	-4,54	37,52	12.39	19.51	14.21
MERCK	2002	19,31	1,23	15,47	29.68	25.08	7.08
	2003	0,977	1,05	25,59	34.06	31.71	8.92
	2004	0,82	0,61	30,14	41.36	37.16	9.43
	2005	-0,31	-0,72	20,87	37.61	31.99	10.35
	2006	1,74	1,09	20,00	42.28	36.74	13.14
	2007	0,29	0,94	18,13	37.41	31.93	8.063
	2008	0,80	0,77	14,58	37.37	30.13	12.21

SQBI	2002	-1,00	0,65	49,75	29.5	22.41	5.07
	2003	0,147	1,55	46,09	30.1	24.95	3.14
	2004	3,47	1,00	28,48	37.21	31.82	11.87
	2005	2,96	1,05	62,99	11.46	8.94	1.24
	2006	5,045	1,62	58,61	30.37	33.06	1.21
	2007	4,10	0,75	43,30	35.34	32.88	0.53
	2008	1,76	1,20	37,37	45.54	43.94	1.01
PYFA	2002	5,26	1,09	16,07	2.13	0.73	80
	2003	2,30	1,69	12,44	2.71	1.02	20
	2004	1,25	4,25	13,33	3.44	2.3	-1.35
	2005	0,91	-0.47	20,60	3.65	2.09	15.47
	2006	0,81	0,67	27,49	4.86	2.65	24.84
	2007	0,07	0,27	42,14	4.37	2.6	11.57
	2008	1,26	0,67	42,45	6.24	3.33	15.60

Sumber: Data Sekunder diolah

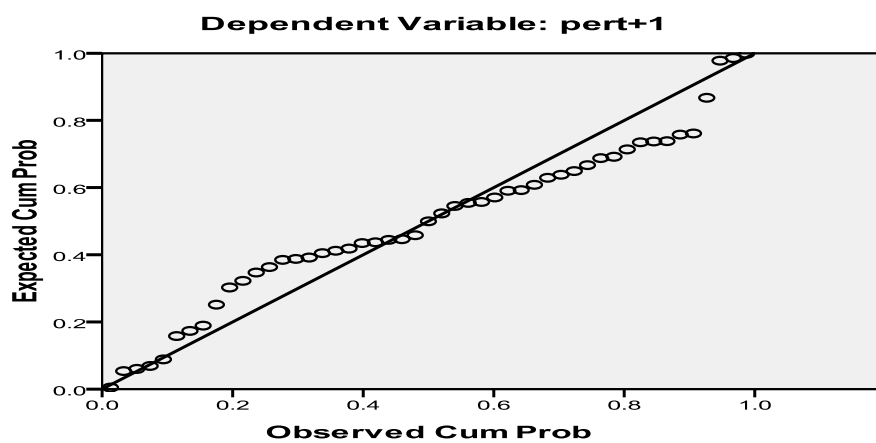
Lampiran 8

Descriptive Statistics

	Mean	Std. Deviation	N
PERT+1	1498.7052	2264.05373	49
DOL	14.986410877	13.4578860671	49
DFL	216.0160	184.91991	49
DER	62.0010	61.76666	49
ROA	17.8485	15.06258	49
ROE	15.5492	17.56237	49

Sumber : Hasil Olahan SPSS

Normal P-P Plot of Regression Standardized Residual



Sumber : Hasil Olahan SPSS

Lampiran 9

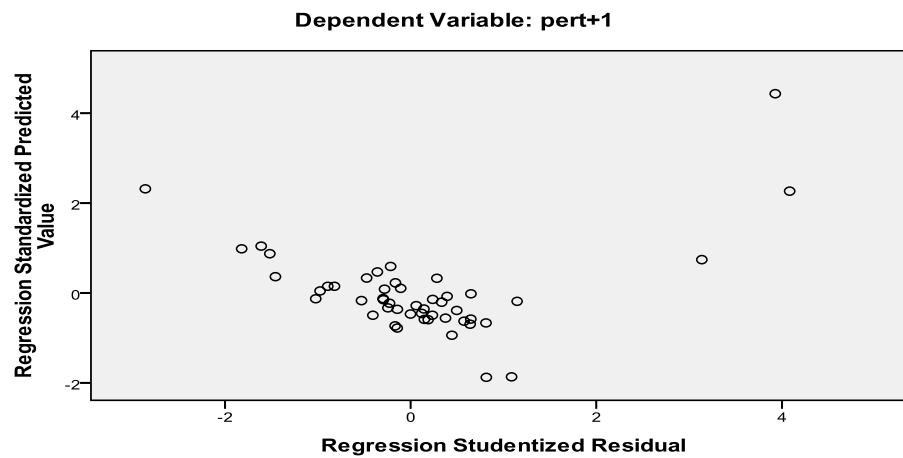
Coefficients^a

Model		Unstandardized Coefficients		Standardized Coefficients	t	Sig.	Collinearity Statistics	
		B	Std. Error	Beta			Tolerance	VIF
1	(Constant)	689.407	636.795		1.083	.285		
	DOL	15.578	27.781	.093	.561	.578	.498	2.007
	DFL	5.594	1.634	.457	3.423	.001	.763	1.311
	DER	.392	5.116	.011	.077	.939	.697	1.434
	ROA	28.597	32.193	.190	.888	.379	.296	3.377
	ROE	-75.063	28.743	-.582	-2.612	.012	.273	3.659

a. Dependent Variable: (X)PERt+1

Sumber : Hasil Olahan SPSS

Scatterplot



Sumber : Hasil Olahan SPSS

Lampiran 10

Model Summary^b

Model	R	R Square	Adjusted R Square	Std. Error of the Estimate	Durbin-Watson
1	.645 ^a	.416	.348	1828.27351	2.034

a. Predictors: (Constant), ROE, DER, DFL, DOL, ROA

b. Dependent Variable: PERt+1

Sumber : Hasil Olahan SPSS

ANOVA^b

Model		Sum of Squares	df	Mean Square	F	Sig.
1	Regression	102313971.843	5	20462794.369	6.122	.000 ^a
	Residual	143731113.736	43	3342584.040		
	Total	246045085.579	48			

a. Predictors: (Constant), ROE, DER, DFL, DOL, ROA

b. Dependent Variable: PERt+1

Sumber : Hasil Olahan SPSS

Lampiran 11

PT. Darya - Varia Laboratoria Tbk						
Tahun	DOL (X)	DFL (X)	DER (X)	ROA (%)	ROE (%)	PER (X)
2002	1.82	-246.55	42.20	21.85	27.98	8.91
2003	-0.56	-1.44	39.44	21.85	18.07	7.87
2004	-0.25	-1.00	35.15	18.57	15.61	17.12
2005	-0.18	-9.19	40.97	13.85	18.32	16.10
2006	0.44	-8.95	35.17	14.09	12.74	17.95
2007	1.19	0.36	21.35	12.06	10.80	7.59
2008	1.64	2.70	25.56	12.26	13.94	11.85

Sumber: Data Sekunder diolah

PT. Indofarma Tbk						
Tahun	DOL (X)	DFL (X)	DER (X)	ROA (%)	ROE (%)	PER (X)
2002	-11.05	0.97	105.53	-6.45	-15.32	-4.05
2003	0.26	-16.39	150.43	-7.71	-52.56	85
2004	-5.32	0.52	104.93	9.66	2.83	2.3
2005	38.62	-1.06	95.60	6.76	3.62	1.07
2006	1.55	0.76	144.91	9.06	5.43	2.30
2007	-1.17	0.97	246.22	4.43	3.80	0.40
2008	2.54	-1.33	225.63	6.52	1.70	120.29

Sumber: Data Sekunder diolah

PT. Kimia Farma Tbk						
Tahun	DOL (X)	DFL (X)	DER (X)	ROA (%)	ROE (%)	PER (X)
2002	-7.97	1.13	53.34	5.86	5.23	26.25
2003	2.86	0.55	81.45	6.75	6.03	14.64
2004	5.81	2.02	44.09	10.63	9.55	-5.08
2005	5.64	1.00	39.49	7.19	6.26	20.83
2006	-1.38	0.59	44.86	4.81	5.05	32.45
2007	3.46	0.67	52.72	5.59	5.75	7.62
2008	2.66	0.16	52.53	7.40	5.84	11.29

Sumber: Data Sekunder diolah.

PT. Kalbe Farma Tbk						
Tahun	DOL (X)	DFL (X)	DER (X)	ROA (%)	ROE (%)	PER (X)
2002	2.10	13.56	311.40	25.52	54.49	0.06
2003	-2.84	-0.58	140.09	13.37	38.95	0.09
2004	6.84	0.12	64.19	24.32	30.54	15.97
2005	0.62	1.53	78.09	22.88	26.84	17.98
2006	0.31	7.59	36.08	23.16	22.59	18.13
2007	0.35	0.79	33.11	21.98	20.84	5.75
2008	0.45	-4.54	37.52	12.39	19.51	14.21

Sumber: Data Sekunder diolah

PT. MERCK Tbk						
Tahun	DOL (X)	DFL (X)	DER (X)	ROA (%)	ROE (%)	PER (X)
2002	19.31	1.24	15.47	29.68	25.08	7.09
2003	0.98	1.05	25.59	34.06	31.71	8.92
2004	0.83	0.61	30.14	41.36	37.16	9.43
2005	-0.32	-0.73	20.88	37.61	31.99	10.35
2006	1.75	1.09	20.01	42.28	36.74	13.14
2007	0.30	0.94	18.14	37.41	31.93	8.06
2008	0.80	0.78	14.59	37.37	30.13	12.22

Sumber: Data Sekunder diolah

PT. Taisho Pharmaceutical Indonesia Tbk						
Tahun	DOL (X)	DFL (X)	DER (X)	ROA (%)	ROE (%)	PER (X)
2002	-1.00	0.65	49.75	29.50	22.41	5.07
2003	0.15	1.56	46.09	30.10	24.95	3.15
2004	3.48	1.01	38.48	37.21	31.82	11.88
2005	2.97	1.06	62.99	11.46	8.94	1.25
2006	5.05	1.62	58.61	30.37	33.06	1.21
2007	4.11	0.75	43.30	35.34	32.88	0.54
2008	1.77	1.20	37.37	45.54	43.94	1.01

Sumber: Data Sekunder diolah

PT. Pyridam Farma Tbk						
Tahun	DOL (X)	DFL (X)	DER (X)	ROA (%)	ROE (%)	PER (X)
2002	5.27	1.09	16.07	2.13	0.73	80
2003	2.30	1.70	12.45	2.71	1.02	20
2004	1.25	4.25	13.34	3.44	2.30	-1.35
2005	0.91	-0.48	20.61	3.65	2.09	15.48
2006	0.82	0.68	27.49	4.86	2.65	24.85
2007	0.07	0.27	42.14	4.37	2.60	11.57
2008	1.26	0.68	42.46	6.24	3.33	15.60

Sumber: Data Sekunder diolah